

SYMBOL KEY

	COLORSOURCE SPOT V 26" ON APOLLO RIGHT ARM	190W
	COLORSOURCE SPOT V 36"	190W
	MARTIN RUSH PAR 2	151W
	CHAVET ROGUE R2X WASH	339W
	S4 19"	750W
	S4 36"	750W
	S4 50"	750W
	S4 JR. 50"	575W
	S4 JR. ZOOM 26-50"	575W
	S4 PAR WFL	750W
	S4 PARNEL	575W

LEGEND

UNIT NUMBER

CHANNEL COLOR

10 1 R119

- ### NOTES
- COLORSOURCE SPOT V 26"S ON RIGHT ARMS DO NOT NEED TO BE MOVED FROM THEIR CURRENT POSITIONS.
 - RUN LIGHT POSITIONS DO NOT NEED TO BE EXACT ON THEIR PLACEMENT ON THE PIPE AS LONG AS THEY ARE CLOSE TO WHERE THEY ARE DRAWN.
 - COLORSOURCE SPOT V 36"S CAN BE MOVED OVER A LITTLE BIT TO ACCOMMODATE SPEAKERS HUNG IN THE SAME AREA AS LONG AS THEY CAN BE FOCUSED AS A WALL SCRAPE.
 - CATWALK FLOORSTAND POSITIONS ARE ALSO NOT EXACT AS THEY WILL PROBABLY BE MOVED AROUND A LITTLE BIT FOR FOCUS.

REVISIONS

F	-	-
E	-	-
D	10/31/2024	FINAL (CLEANED UP)
C	9/27/2024	OK TO HANG (MINUS COLOR)
B	9/19/2024	PRELIM 2
A	9/6/2024	PRELIM 1



TOWN HALL

LIGHTING DESIGN: MAYA BATTISTELLA
 DIRECTOR: NIOO TORREZ
 SCENIC DESIGN: DAN DALY
 STAGE MANAGER: JESS ROMANOWSKI
 PRODUCTION ELECTRICIAN: MAX ROSENFELD
 PROGRAMMER: PHOEBE ALBRO

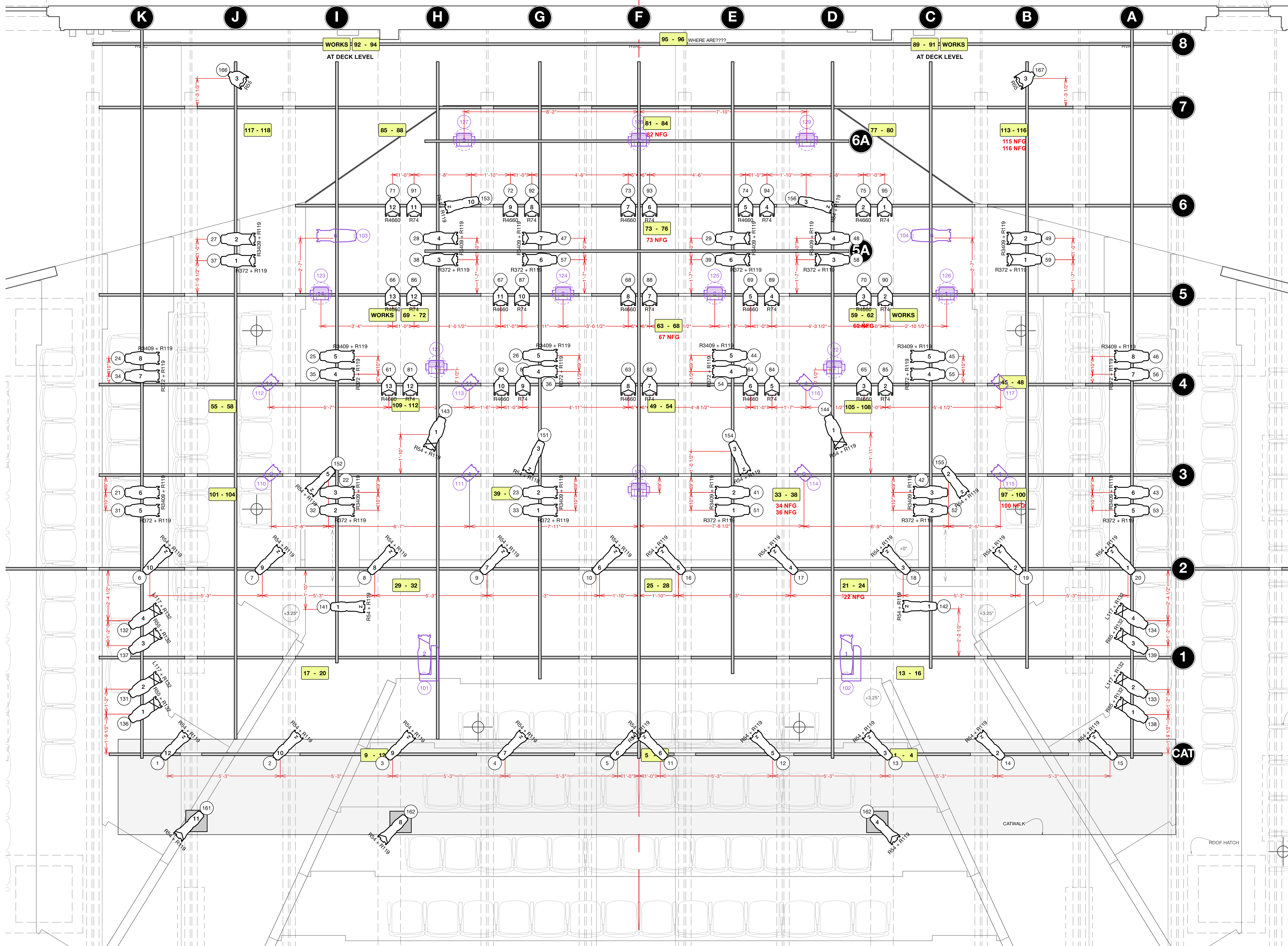
SUNY NEW PALTZ THEATRE ARTS PARKER THEATRE

LIGHT PLOT

PLATE 1 OF 3

SCALE: 1/2" = 1'-0"

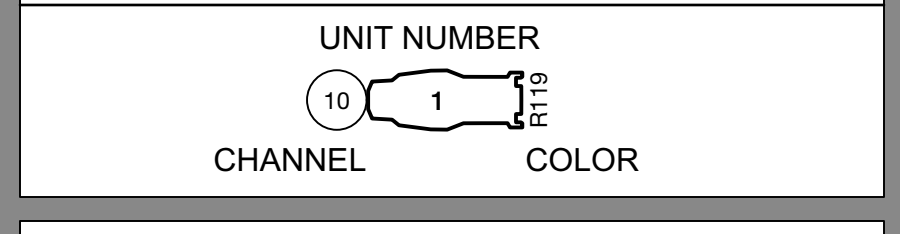
DRAWN BY: MAYA BATTISTELLA



SYMBOL KEY

	COLORSOURCE SPOT V 26\"/> ON APOLLO RIGHT ARM	190W
	COLORSOURCE SPOT V 36\"/>	190W
	MARTIN RUSH PAR 2	151W
	CHAVET ROGUE R2X WASH	339W
	S4 19\"/>	750W
	S4 36\"/>	750W
	S4 50\"/>	750W
	S4 JR. 50\"/>	575W
	S4 JR. ZOOM 26-50\"/>	575W
	S4 PAR WFL	750W
	S4 PARNEL	575W

LEGEND



NOTES

- COLORSOURCE SPOT V 26\"/>S ON RIGHT ARMS DO NOT NEED TO BE MOVED FROM THEIR PREV. REP. POSITIONS
- RUN LIGHT POSITIONS DO NOT NEED TO BE EXACT ON THEIR PLACEMENT ON THE PIPE AS LONG AS THEY ARE CLOSE TO WHERE THEY ARE DRAFTED
- COLORSOURCE SPOT V 36\"/>S CAN BE MOVED OVER A LITTLE BIT TO ACCOMMODATE SPEAKERS HUNG IN THE SAME AREA AS LONG AS THEY CAN BE FOCUSED AS A WALL SCRAPE.
- CATWALK FLOORSTAND POSITIONS ARE ALSO NOT EXACT AS THEY WILL PROBABLY BE MOVED AROUND A LITTLE BIT FOR FOCUS.

REVISIONS

F	-	-
E	-	-
D	-	-
C	9/27/2024	OK TO HANG (MINUS COLOR)
B	9/19/2024	PRELIM 2
A	9/6/2024	PRELIM 1



TOWN HALL

LIGHTING DESIGN: MAYA BATTISTELLA
 DIRECTOR: NIOO TORREZ
 SCENIC DESIGN: DAN DALY
 STAGE MANAGER: JESS ROMANOWSKI
 PRODUCTION ELECTRICIAN: MAX ROSENFELD
 PROGRAMMER: PHOEBE ALBRO

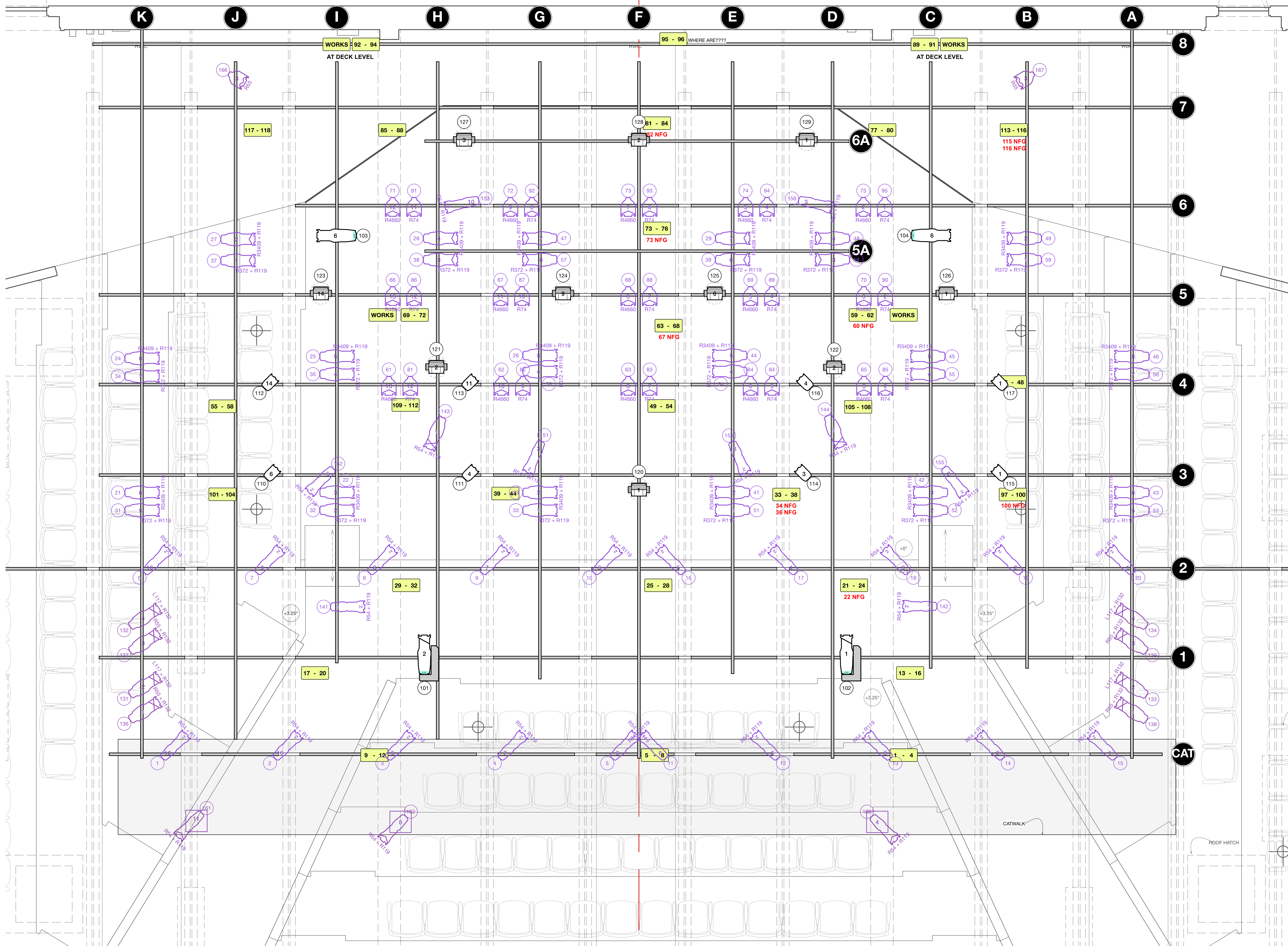
SUNY NEW PALTZ THEATRE ARTS
 PARKER THEATRE

CIRCUITS

PLATE **2** OF **3**

SCALE: 1/2" = 1'-0"

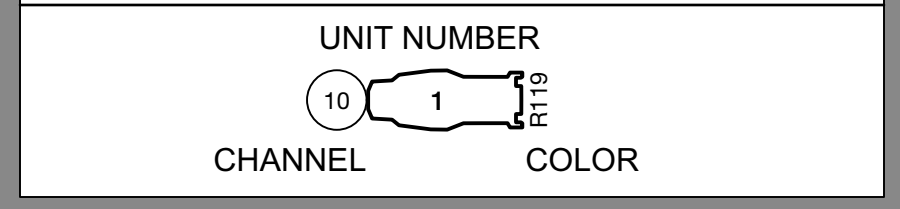
DRAWN BY MAYA BATTISTELLA



SYMBOL KEY

	COLORSOURCE SPOT V 26" ON APOLLO RIGHT ARM	190W
	COLORSOURCE SPOT V 36"	190W
	MARTIN RUSH PAR 2	151W
	CHAVET ROGUE R2X WASH	339W
	S4 19"	750W
	S4 36"	750W
	S4 50"	750W
	S4 JR. 50"	575W
	S4 JR. ZOOM 26-50"	575W
	S4 PAR WFL	750W
	S4 PARNEL	575W

LEGEND



NOTES

- COLORSOURCE SPOT V 26"S ON RIGHT ARMS DO NOT NEED TO BE MOVED FROM THEIR PREV. REP. POSITIONS
- RUN LIGHT POSITIONS DO NOT NEED TO BE EXACT ON THEIR PLACEMENT ON THE PIPE AS LONG AS THEY ARE CLOSE TO WHERE THEY ARE DRAFTED
- COLORSOURCE SPOT V 36"S CAN BE MOVED OVER A LITTLE BIT TO ACCOMMODATE SPEAKERS HUNG IN THE SAME AREA AS LONG AS THEY CAN BE FOCUSED AS A WALL SCRAPE.
- CATWALK FLOORSTAND POSITIONS ARE ALSO NOT EXACT AS THEY WILL PROBABLY BE MOVED AROUND A LITTLE BIT FOR FOCUS.

REVISIONS

F	-	-
E	-	-
D	-	-
C	9/27/2024	OK TO HANG (MINUS COLOR)
B	9/19/2024	PRELIM 2
A	9/6/2024	PRELIM 1



TOWN HALL

LIGHTING DESIGN: MAYA BATTISTELLA
 DIRECTOR: NICO TORREZ
 SCENIC DESIGN: DAN DALY
 STAGE MANAGER: JESS ROMANOWSKI
 PRODUCTION ELECTRICIAN: MAX ROSENFIELD
 PROGRAMMER: PHOEBE ALBRO

SUNY NEW PALTZ THEATRE ARTS
 PARKER THEATRE

LIGHT PLOT

PLATE **3** OF **3**

SCALE: 1/2" = 1'-0"

DRAWN BY: MAYA BATTISTELLA